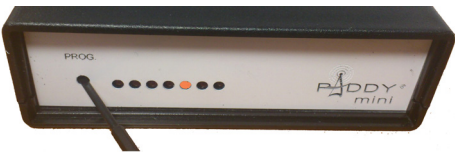


RS232 MODULE PM-RS

QUICK SET-UP GUIDE



1 Power the unit, then gently press the «prog» button with a rounded stick. The «no code» LED goes off and only one LED remains lit up.



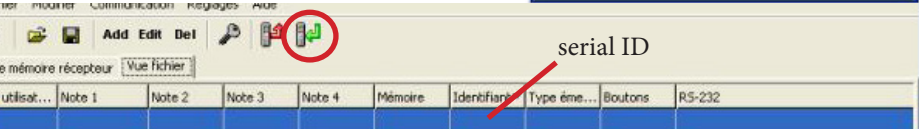
2 press any one of the transmitter buttons TWICE, and watch the two LEDs blink three times. The serial ID of the transmitter is now recorded.



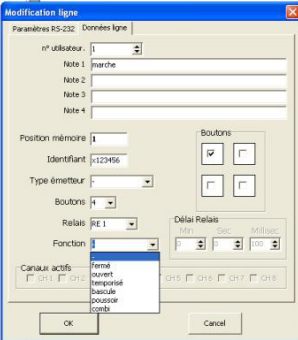
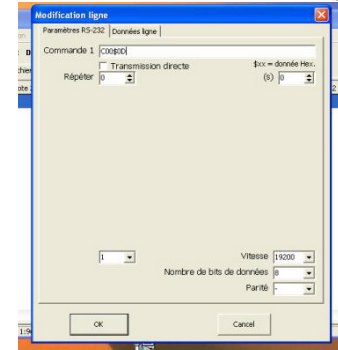
3 connect the PM-RS module to the serial port of your computer, or to the USB / serial adapter, using a straight cable.



4 open Quickpad application (free download @ http://www.aveco.fr/domotique-audiovisuel/Paddy-mini/kits_Paddy.html) and create a new file (select type receiver «RX1data3»). Click the green arrow icon in toolbar to retrieve the recorded serial ID.

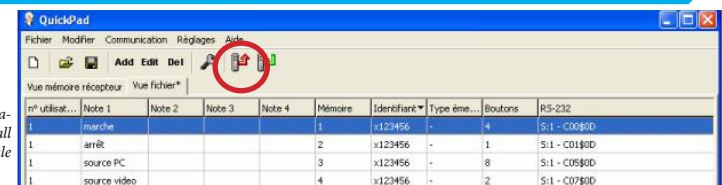


5 click «add» to create a new command line; type a new RS232 chain in the command window, specify transmission speed, data bits and parity. A command can be repeated, and/or delayed by n secs.



6 click the record data tab and enter the serial ID as displayed in 4, tick the button that must send the command (combinations allowed), and specify a relay function if needed. Then click OK. Repeat 5 and 6 for all 4 buttons.

7 When the four lines are completed, the main window must look as shown below; click the red arrow icon to load into the RSR232 module.



Please refer to the detailed manual for more information on all capabilities of the RS232 module and Quickpad programming.